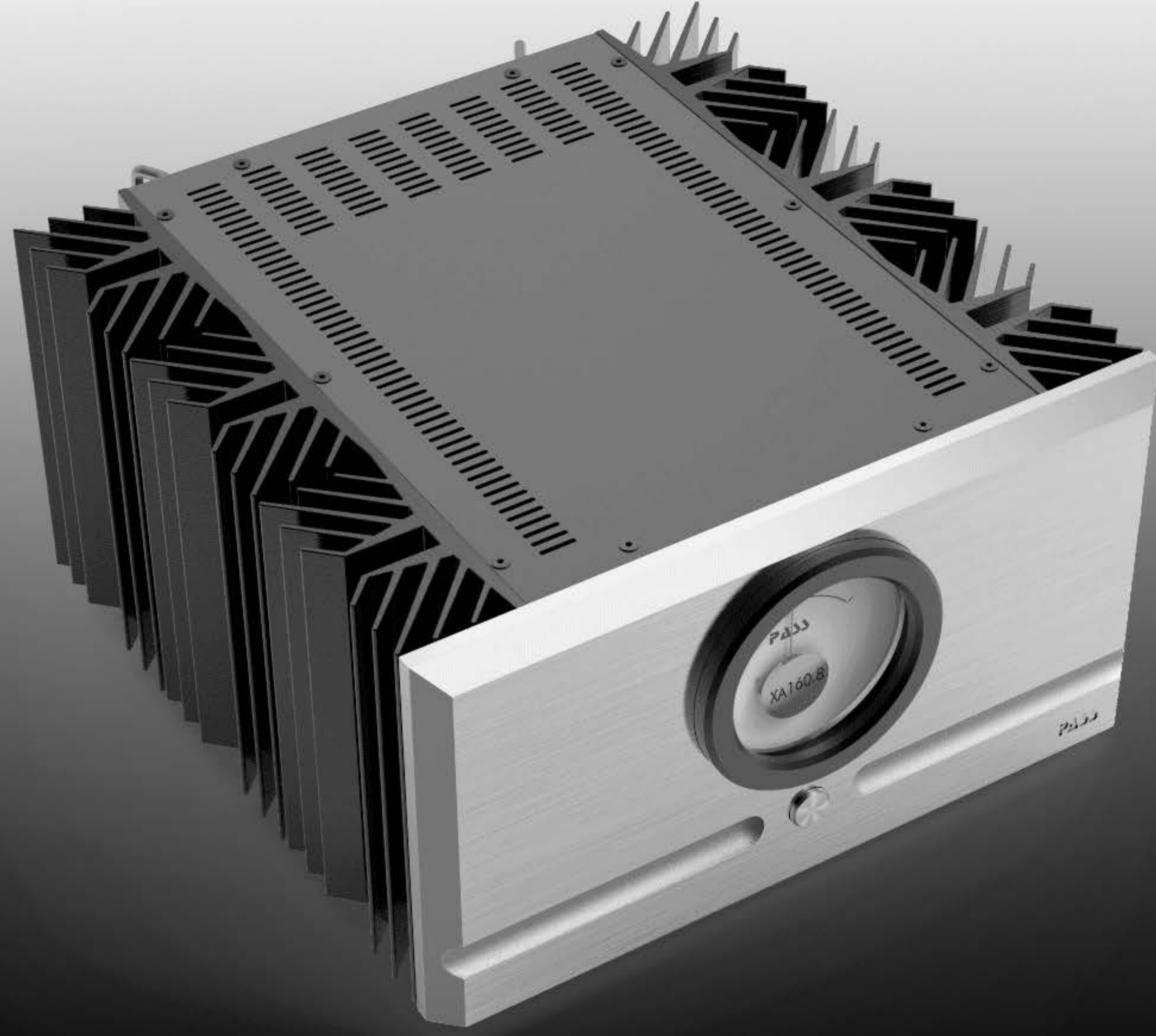




PASS

XA 160.8

PASS





PASS

XA 160.8

PASS



M

L



Jumper must be used with single-ended input

Positive (+)

Positive (+)

Negative (-)

Negative (-)

Supersymmetry
U.S. Patent Number: 5,376,899



CE

Signal Gnd

12V External Turn-on

Pass Laboratories,

No user serviceable parts inside.